

*The Rake & Hoe Garden Club, Inc.  
of Westfield Presents*

*A National Garden Club  
Standard Flower Show*

# GET INSPIRED!

*Let your creativity  
bloom*

Saturday, April 26, 2025

1 PM – 6 PM

Free Admission and Open to the Public

Shady Rest Golf and Country Club  
820 Jerusalem Rd  
Scotch Plains, NJ

A member of District 5 of the Garden Club of New Jersey  
(GCNJ) Central Atlantic Region

National Garden Clubs, Inc. (NGC)

[www.rakeandhoe.gc.org](http://www.rakeandhoe.gc.org)



**The Rake and Hoe  
Garden Club, Inc. of Westfield**

presents

A NGC Standard Flower Show

# “Get Inspired”

Let Your Creativity Bloom

**April 26, 2025  
1:00PM to 6:00PM  
Saturday**

Shady Rest Golf and Country Club  
820 Jerusalem Road  
Scotch Plains, New Jersey

A member of District 5 of the  
Garden Club of New Jersey (GCNJ)  
Central Atlantic Region  
National Garden Clubs, Inc. (NGC)

**Free Admission  
Open to the Public**

[www.rakeandhoe.gc.org](http://www.rakeandhoe.gc.org)  
[www.gardenclubofnewjersey.org](http://www.gardenclubofnewjersey.org)

## **Table of Contents**

	Page
Table of Contents/ Flower Show Committee	2
Standard Scale of Points/ Flower Show General Rules	3 - 6
Design Rules/Division	7 - 10
Horticulture Rules/Division	11 - 13
Botanical Arts Division	14 - 17
Youth Rules/Division	17 -18
Education Rules/Division	19

## **Flower Show Committee**

Show Chair	Sharon Shiraga	908-447-2460
Show Advisors	Kay Cross,	908-233-3422
	Diana Kazazis	908-447-0299
Artistic Crafts Chair	Nancy Smith	908-578-4741
Awards Chair	Diana Kazazis	908-447-0299
Clerks Chair	Beth Siano	908-410-4630
Design Chair	Nina Sylvester	908-956-5791
Docent Chair	Richard Pelikan	908-612-8692
Education Chair	Beth Siano	908-410-4630
	Sharon Shiraga	908-447-2460
Horticulture Chairs	Inge Bossert	908-568-1217
	Irene Greenstein	908-337-4505
	Adah Levin	908-337-6743
Judges Chair	Kay Cross	908-233-3422
Judges Breakfast	Beth Hanscom	908-456-3060
Judges Luncheon	Jeanette Pelikan	908-612-8692
Photography Chair	Margot Partridge	908-403-7670
Publications Chair	Barbara Murphy	908-418-0209
Publicity	Liz Ryan	908-578-8194
Schedule Chair	Diana Kazazis	908-447-0299
Schedule Consultant	Florence Leyssene	GCNJ
Signage/Name Tags Chair	Sharon Shiraga	908-447-2460
Staging Chair	Carolyn Seracka	908-451-2220
Tea Chairs	Tracy Criscitiello,	908-803-2675
	Lee Perry	908-578-5684
Treasurer	Betsy Chance	908-723-3338
Youth Co-Chairs	Alice Cowell,	908-400-4374
	Joan Barna	908-232-6211

A *Standard Flower Show* will be evaluated by panels of three judges. They use strict criteria from the National Garden Club (NGC), which includes an objective Standard Scale of Points and specific rules for each division.

**STANDARD SCALE OF POINTS**

**Judging will be based on the Scales of Points in the Handbook for Flower Shows (HFS), revised July, 2024. See information for each category.**  
**<https://gardenclub.org/sites/default/files/2024-06/ngcfs-handbook-revised-july-2024.pdf>**

**Design Exhibits** judging will be based on one Design Scale of Points, from the handbook (HFS, pg. 130) for a total of 100 points.

Conformance	14
Design	48
Selection of Components	8
Organization of components	8
Expression	8
Distinction	14

**Horticulture Exhibits** judging will be based on the #1 Horticulture Scale of Points, found on (HFS, pg.129) for a total of 100 points.

Conformance	5
Plant identification	5
Peak of perfection	
Form	20
Color	20
Maturity/size	20
Condition/blemishes	15
Grooming/Staging	
Grooming	10
Staging	5

**Artistic Crafts Exhibits** judging will be based on the Artistic Craft Scale of Points, found on (HFS, pg. 131) for a total of 100 points.

Conformance	14
Design	48
Craftsmanship/Technique	24
Distinction	14

**Photography Exhibits** judging will be based on the Photography Scale of Points found on (HFS, pg. 131) for a total of 100 points.

Conformance	5
Interpretation of Class Title	10
Artistry/Creativity	25
Composition	25
Technical achievement	25
Distinction/Impact	10

*Youth Exhibits judging will be based on the adult scales however, a 90 instead of a 95 is required to receive a Youth Top Exhibitor Award.*

### **NATIONAL GARDEN CLUB TOP EXHIBITOR AWARDS**

**Award of Design Excellence** may be awarded to the highest scoring blue ribbon winner 95 or above, judged to be the finest in the Design Division, Except for Section A, Class 1. Only one may be awarded. Rosette of gold ribbons.

**Designer's Choice Award** may be awarded to the highest scoring blue ribbon winner 95 or above, in the Design Division, Section A, Classes 2-4. Only one awarded. Rosette of purple.

**Table Artistry Award** may be awarded to the highest scoring blue ribbon winner 95 or above, in the Design Division, Section C, Classes 6-8. Only one awarded. Rosette of burgundy ribbons.

**Award of Horticultural Excellence** may be awarded to the highest scoring *named* blue ribbon winner 95 or above, judged to be the finest in the entire Horticulture Division. Only one may be awarded. Rosette of green, orange and blue ribbons.

**Arboreal Award (2)** may be awarded to the highest scoring correctly *named* blue ribbon winner 95 or above, in Horticulture Division, Section D, Classes 14-17 and E, Classes 18-21. Two awarded. Rosette of two shades of green.

**Award of Merit (3)** may be awarded to the highest scoring correctly *named* blue ribbon winner 95 or above, in Horticulture Division, Section A, Classes 1-4; Section B, Classes 5-9 and Section C, Classes 10-13. Three awarded. Rosette of orange ribbons.

**Grower's Choice Award (2)** may be awarded to a correctly *named* blue ribbon winner scoring 95 or above in Horticulture Division, Sections F, Classes 22-25 and Section G, Classes 26-29. Two awarded. Rosette of hunter green.

*Handbook pages for Awards pps. 39-48*

**Artistic Craft Award** may be awarded to the highest scoring blue ribbon winner 95 or above, in the Botanical Arts Division, Section A, Classes 1-3. Only one awarded. Rosette of navy blue

**Photography Award** may be awarded to the highest scoring blue ribbon winner 95 or above, in the Botanical Arts Division, Section B, Classes 4-7. Only one awarded. Rosette of black and white ribbons.

**Youth Top Exhibitor Award (9)** may be awarded to a blue ribbon winner scoring 90 or above in the Youth Division, Section A, Class 1; Section B, Classes 2-3 and Section C, Class 4. One each per three age categories subdivided at placement. Rosette of red, white and blue ribbons.

**RAKE AND HOE CLUB AWARDS**

**The Kay Cross Award** may be awarded to the highest rated blue ribbon winner in the Design Division, Section A, Classes 2, 3, 4 and 5.

**The Nancy Wallace Trophy** may be awarded to the highest rated blue ribbon winner in the Horticulture Division, Section A, B and C, Classes 1-13.

**The Judy Kampe Award** will be awarded to the best Artistic Craft in the Botanical Arts Division, Section A, Classes 1-3 by highest count of Public Popular Vote.

**Club Photography Award** may be awarded to the most Public Popular Votes counted for a photograph in the Botanical Arts Division, Section B, Classes 4-7.

**NGC STANDARD SYSTEM OF AWARDING**

First Place, only one per class or subclass and must score 90 or above	Blue
Second Place, only one per class or subclass and must score 85 or above	Red
Third Place, only one per class or subclass and must score 80 or above	Yellow
Fourth Place, only one per class or subclass and must score 75 or above	White

## **FLOWER SHOW RULES**

### **General Rules:**

1. All classes are open to the public except Design Division, Class 1 and in the Botanical Arts Division, Section B Photography. Any entry from the public **MUST** be pre-registered with consultant. All classification/division chairs check for entry conformity to the schedule prior to judging. Final conformance is the judges' responsibility. Cards are available from Awards Chair.
2. Judging based on NGC Standard System of Awarding by NGC Accredited Flower Show Judges; to begin at 10:00AM on Saturday, April 26, 2025. Show will open at completion of judging. Decision of judges final. Awards may be withheld if not merited.
3. All entries to be received on Friday, April 25th between 1-5pm. Designs can also be entered on Saturday, April 26<sup>th</sup> between 8:30am and 9:30am. Special exceptions granted by Show chair.
4. All tabletops covered with tablecloths by the Committee. See colors listed in specific sections.
5. All properties must be removed at the show closing on Saturday, April 26, 2025 at 6pm but **not before**.
6. Each entry judged must be the work of one exhibitor, except where noted. NO artificial plant material allowed, emphasis on fresh.
7. Exhibitors may enter more than one class or subclass, but only one exhibit per class or sub-class. Exception for the Photography section where exhibitor is limited to one entry. Horticulture Division may enter more than one per class if can be subdivided.
8. Plant material on the NJ Conservation Guide List is NOT permitted unless grown by the exhibitor or legally acquired and must be so stated on a 3"x5" card. <https://dep.nj.gov/njfw/wildlife>
9. Plant material on the NJ Invasive Species List is not permitted unless grown by the exhibitor or legally acquired and must be so stated on a 3"x5" card. <https://dep.nj.gov/invasive-species/>
10. Show chair, consultants and Horticulture/Classification chairs may be on the floor at the time of judging along with judges and clerks.
11. RHGC will strive to ensure the safety of entries but is not responsible for the loss or damage to the entry.

**Limited space prohibits more detailed information. Please consult Handbook for Flower Shows, edition July, 2024 or Class Consultant. <https://gardenclub.org/sites/default/files/2024-06/ngcfs-handbook-revised-july-2024.pdf>**

# *Division I*

## **Design**

### *People of Greatness*

*“Inspiration can come from many sources, including nature, art, people, and personal experiences. It can motivate us to achieve our goals, think creatively, and make a positive impact on the world around us.”*

#### **Design Rules:**

1. The NGC Exhibit Policies are printed in the Handbook for Flower Shows, Chapter 7, Exhibiting in the Design Division, NGC Policies and Guidelines. July, 2024 edition.
2. Advance registration is required by April 7, 2025.
3. Plant material and non-plant material permitted and not permitted in the Division are printed in the Handbook, Chapter 7.
4. All plant material must be identified on a card, provided by exhibitor and included with the entry tag.
5. Rules for Design Types, Advanced Design Types, Table Design and Table Appointments are printed in the Handbook, Chapter 7.
6. No artificial flowers, foliage, fruit or vegetables permitted.
7. Designs must be the work of one individual who is named on the entry card.
8. Fresh plant material may not be treated in any manner. Some plant material must be used in every exhibit.
9. If exhibitor cannot fulfill assignment, it is their responsibility to find a replacement.
10. Landscapes, scenes or living animals not permitted in the Design Division.
11. Design Chair to assess exhibit conformance to the schedule.

#### **Design Sections and Classes:**

Consultant: Nina Sylvester 908-956-5791 [nina.sylvester24@gmail.com](mailto:nina.sylvester24@gmail.com)

**Eligible for AWARD OF DESIGN EXCELLENCE** (Classes 2-8)



## **SECTION A “People Who Fulfill Our Lives”**

Eligible for the DESIGNER’S CHOICE AWARD (Classes 2, 3, and 4)

Eligible for the KAY CROSS AWARD (Classes 2, 3, 4 and 5)

### **CLASS 1 Educator – “Education is not the filling of a pail but the lighting of a fire”~ William Butler Yeats (4 entries)**

*“A teacher affects eternity; he can never tell where his influence stops” ~ Henry Adams*

*Select a specific design type from the Handbook, pgs. 73-79. Class reserved for judges only, exhibitor to create one of many types of designs which inspires them. Staged on a 16” square top x 41”H pedestal. Viewed from the front. Height not restricted. Designer’s choice of plant material and components. Provide information in advance to the consultant by April 7th with a description of this design type for the public to learn about it. Typed by the committee and placed with design.*

### **CLASS 2 Leader - “One Person Can Make a Difference.” (4 entries)**

*“Strive not to be a success, but rather to be of value”*

*~ Albert Einstein*

*A Creative Design staged on a black mesh, cylindrical pedestal 12”diameter x 42”H provided by the committee. Height not restricted. Underlay permitted. Viewed from the front. Designer’s choice of plant material. Provide information in advance to the consultant by April 7th with the person who you think had a great impact on the world and why. Typed by the committee and placed with design.*

### **CLASS 3 Special Person - “When I’m with You, I’m Right Where I Want to Be.” (4 entries)**

*“A special person is like a rare gem, treasured for their unique sparkle.” ~ Anonymous*

*A Traditional Design, staged on a black pedestal 16” square top x 41”H provided by committee. Underlay permitted. Height not restricted. Viewed from the front. Designer’s choice of plant material. Provide information in advance to the consultant by April 7th with your favorite person noted and why. Typed by the committee and placed with design.*

**CLASS 4 Artist – “Art, Undeniably, is Conducive to Happiness.”**  
~ Anonymous (4 entries)

*“A True artist is not one who is inspired but one who inspires others.*

*~Salvador Dali*

*A Design, Freedom of Style*, inspired by your favorite work of art. Design staged on 36”W x 30”D space of a 6ft. table covered with white tablecloth adjacent to the artwork. Choice of plant materials and other components. Overlay permitted. Submit digital piece of artwork to consultant which will then be printed in 8”x10” size and staged in an easel by committee. Provide information in advance to the consultant by April 7<sup>th</sup> with your favorite artist and why. Typed by the committee, placed with the design.

**SECTION B “People Who Give Us Joy”**

**CLASS 5 Musician – “Music is the Divine Way to Tell Beautiful, Poetic Things to the Heart” ~Pablo Casals (4 entries)**

“I’ve always said music should make you laugh, make you cry or make you think.” ~Kenny Rogers

*A Petite Design, freedom of style*, to be staged in a light grey, mini shadow box, 61/2”W x 6”D x 7”H. Exhibitor to provide background and underlay. Designer’s choice of plant material. Provide information in advance to the consultant by April 7<sup>th</sup> with your favorite musician and why. Typed by the committee and placed with the design.

**SECTION C “People Who Ignite Our Passions”**

Eligible for the TABLE ARTISTRY AWARD (Classes 6, 7 and 8)

**CLASS 6 Writer – “You Can’t Wait for Inspiration.”**

~Jack London (4 entries)

*“Writers and artists know that ethereal moment, when just one, fleeting something – a chill, an echo, the click of a lamp, a question – ignites the flame of an entire work that blazes suddenly into consciousness.”*

*~Nadine C. Keels*

*A Functional Table Design for two*, sitting across from each other on a 36” diameter table provided. White tablecloth to the floor provided by committee. Overlay permitted. Designer’s choice of plant materials and other components. Provide information in advance to the consultant by April 7<sup>th</sup> with the author with whom you would most enjoy dining and why. Typed by the committee and placed with the design.

**CLASS 7 Veteran – “Never was so much owed by so many to so few” –Winston Churchill. (4 entries)**

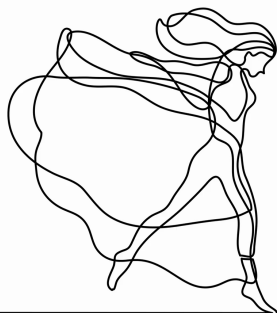
*“Our flag does not fly because the wind moves it ... it flies with the last breath of each soldier who died protecting it.” ~ Unknown*

*A Tray Table for one.* Novice class, exhibitor may not have won a blue ribbon in a flower show Design Division previously. Staged on a tray for one person on a quarter of a 5 ft. round table covered with a white tablecloth provided by the committee. Designer’s choice of plant material and style of tray. Provide information in advance to the consultant by April 7th with your favorite veteran and why. Typed by the committee and placed with design.

**CLASS 8 Dancer – “...I only try to dance better than myself.” ~Mikhail Baryshnikov (4 entries)**

*“Dance is the purest expression of every emotion, earthly and spiritual.” ~ Anna Pavlova*

*A Tray Table for one.* Staged on a tray for one person on a quarter of a 5 ft. round table covered with a white tablecloth provided by the committee. Designer’s choice of plant material and style of tray. Provide information in advance to the consultant by April 7th with your favorite dancer and why. Typed by the committee and placed with design.



# *Division II*

## Horticulture

### *Beauty in Bloom*

#### **Horticulture Rules:**

1. The NGC Exhibit Policies are printed in the Handbook for Flower Shows, Chapter 6, Exhibiting in the Horticulture Division, July, 2024 edition, pg. 49-60.
2. The rules for a single species cut or container-grown specimen are listed in the Handbook for Flowers Shows or its supplement Horticulture Exhibiting and Judging.
3. In order to receive an NGC Top Exhibitor Award, the exhibitor must identify her/his entry by its binomial name or currently acceptable scientific designation.
4. Entry cards are to be filled out in advance if possible and correctly filled out according to the Handbook written in pencil or waterproof pen.
5. Cut specimens should not have foliage below the water line.
6. If a plant is considered a flowering plant, it should be exhibited as a flowering specimen. Foliage plants may flower, but should be exhibited as foliage plants if they are grown for their leaves.
7. Specimens with a class designation in the schedule may not be entered in the Any Other Worthy class.
8. The Horticulture Classification Committee Chair or General Show chair are free to subdivide classes by color, form, size, cultivar, variety or other distinguishing characteristics.
9. The Scales of Points for Horticulture are located in Chapter 14 of the Handbook for Flower Shows.
10. Container- grown plants must be in exhibitor's possession at least 90 days. Any potted plant exceeding 10" in diameter must be pre-registered. Container plants may be double potted.
11. Containers and wedging for cut specimens provided by committee.
12. Horticulture Chair to assess exhibit conformance to the schedule.

#### **Horticulture Sections and Classes:**

Consultant: Inge Bossert 908-568-1217, [ibossert@msn.com](mailto:ibossert@msn.com)

Consultant: Irene Greenstein [irenebgreenstein@gmail.com](mailto:irenebgreenstein@gmail.com)

Consultant: Adah Levin 908-337-6743, [adahh@aol.com](mailto:adahh@aol.com)

Eligible for AWARD OF HORTICULTURAL EXCELLENCE

Eligible for the NANCY WALLACE AWARD

Please pre-register pots over 10 inch size. All horticulture staged on tables covered with off-white tablecloths by Committee.

## SECTION A “Flowers don’t tell, they show”

~ Stephanie Skeem

**Herbaceous Flowering Perennials.** One cut stem with at least one leaf attached. May provide 3 flowering stems in one container for small specimens.

Eligible for AWARD OF MERIT

- |         |                                  |
|---------|----------------------------------|
| CLASS 1 | <i>Aquilegia</i> - Columbine     |
| CLASS 2 | <i>Dicentra</i> – Bleeding Heart |
| CLASS 3 | <i>Primula</i> – Primrose        |
| CLASS 4 | Any other worthy named specimen  |

## SECTION B “Where flowers bloom so does hope”

~ Lady Bird Johnson

**Bulbs, corms, rhizomes.** One cut stem, with two leaves attached for Class 8 *Tulipa*. Small specimens may provide 3 stems in one container. Eligible for AWARD OF MERIT

- |         |                                 |
|---------|---------------------------------|
| CLASS 5 | <i>Hyacinth</i> – Hyacinth      |
| CLASS 6 | <i>Iris</i> – Iris              |
| CLASS 7 | <i>Narcissus</i> – Daffodil     |
| CLASS 8 | <i>Tulipa</i> - Tulip           |
| CLASS 9 | Any other worthy named specimen |

## SECTION C “To plant a garden is to believe in tomorrow.”

~ Audrey Hepburn

**Herbaceous Foliage Perennials.** One cut stem with at least one leaf attached. May provide 3 stems in one container for small specimens. Flower, if available, is allowed, however, leaf is conforming to class. Eligible for AWARD OF MERIT

- |          |                                    |
|----------|------------------------------------|
| CLASS 10 | <i>Brunnera</i> – Siberian Bugloss |
| CLASS 11 | <i>Heuchera</i> – Coral Bells      |
| CLASS 12 | <i>Polypodiopsida</i> – Ferns      |
| CLASS 13 | Any other worthy named specimen    |

## **SECTION D “A thing of beauty is a joy forever”**

~ **John Yeats**

**Flowering Tree Branch.** One branch 10” to 26” in length.

Apical tip present with several nodes. Branch may be forced.

Eligible for ARBOREAL AWARD

- CLASS 14      *Cornus* – Dogwood
- CLASS 15      *Magnolia* - Magnolia
- CLASS 16      *Malus sylvestris* – Crab apple
- CLASS 17      Any other worthy named specimen

## **SECTION E “Daddy, it’s raining petals” ~ Anonymous**

**Flowering Shrub Branch.** One branch 8” to 16” in length.

Apical tip present with several nodes. Branch may be forced.

Eligible for ARBOREAL AWARD

- CLASS 18      *Forsythia*– Forsythia
- CLASS 19      *Rhododendron* – Azalea
- CLASS 20      *Viburnum* - Viburnum
- CLASS 21      Any other worthy named specimen

## **SECTION F “Earth laughs in flowers”**

~ **Ralph Waldo Emerson**

**Container-grown Flowering or Fruited Plants.**

Eligible for GROWER’S CHOICE AWARD

- CLASS 22      *Orchidaceae* - Orchid
- CLASS 23      *Saintpaulia* - African Violet
- CLASS 24      *Spathiphyllum* – Peace Lily
- CLASS 25      Any other worthy named specimen

## **SECTION G “A chaplet of leaves crowns the victor” ~Virgil**

**Container-grown Foliage Plants.**

Eligible for GROWER’S CHOICE AWARD

- CLASS 26      *Begonia* – Begonia
- CLASS 27      *Chlorophytum* – Spider plant
- CLASS 28      *Dracaena*– Dracaena
- CLASS 29      Any other worthy named specimen

*Division III*  
**Botanical Arts**  
*Nature's Wonders*

**Botanical Arts Rules:**

*Artistic Crafts*

1. Exhibit must contain some fresh and/or dried plant material. Only dried material may be treated.
2. No artificial, endangered or locally invasive plant material may be used. Accessories may be used ie shells, feathers etc.
3. Metal clasps, hooks etc. are permitted.
4. Non-plant material may be used for construction but not showing.
5. A card listing plant material must be included with all artistic craft entries. Staged on light gray tablecloths.
6. Judged by the Artistic Crafts Scale of Points.

*Photography*

1. All photographs are to be pre-registered by email with consultant by April 7th, 2025. No public entries allowed.
2. Exhibitor may submit only one entry.
3. Committee will accept or reject photograph on basis of conformance and may subdivide classes.
4. All photographs, 8"x10", to be submitted in an 11"x14" white mat board frame in cellophane sleeve. Committee to stage photographs. Entry card provided by exhibitor; may include a short descriptive title.
5. All photographs must be labeled on the back with exhibitor's name, with arrows indicating orientation for hanging.
6. No photo to be entered if already awarded a ribbon at an alternate show.
7. Judging consideration shall include creativity, composition, technical merit/quality of the image, conformance/interpretation, distinction/wow factor.
8. Photographs may be submitted in either B&W or color.
9. All exhibits must relate to NGC goals, initiatives and/or objectives.

## **Botanical Arts Division, Section and Classes :**

### **SECTION A ARTISTIC CRAFTS**

#### **"All Creatures Great and Small"**

*Animals have no voice. They can't ask for help. They can't ask for freedom. They can't ask for protection. Humanity must be their voice.*

*~ AD Williams*

Consultant: Nancy Smith 908-578-4741, nancyreidsmith@gmail.com

Eligible for BOTANICAL ARTS ARTISTIC CRAFT AWARD

Eligible for JUDY KAMPE AWARD by PUBLIC POPULAR VOTE

#### **CLASS 1 "Be Kind to Animals" (min. 4 entries)**

*"Building a better world for all of us begins with a few simple actions and American Humane, the country's first national humane organization, is challenging people to commit to protecting and improving the lives of millions of animals during "Be Kind to Animals Week®", the oldest commemorative week in U.S. history, and the nation's longest-running humane education campaign." Celebrate first week of May.*

*<https://www.americanhumane.org>*

*A dried flower postcard, depicting a representation of an animal composed of plant material mounted on a rectangular piece of cardstock. Writing permitted on the front, nothing need be written on the back. Committee will stage on an easel. Designer's choice of plant materials and other natural accessories permitted. Staged by committee on table covered with gray tablecloth. Provide card of plant materials used. (Handbook, pg. 95)*

#### **CLASS 2 "Protecting Wildlife" (min. 4 entries)**

*"The service aims to protect species from extinction, restore habitats, and foster biological diversity.*

*U.S. Conservation laws, such as the Endangered Species Act (ESA), help define the United States' stance*

*on conservation." U.S. Fish and Wildlife Service*

*<https://www.fws.gov/initiative/protecting-wildlife>*

*A 3 dimensional animal, composed of dried and/or fresh plant material. Mechanics of any sort may be used provided they are covered with plant material. Designer's choice of plant materials and other natural accessories permitted. Staged by committee on a six foot table covered with gray tablecloth. Provide card of plant materials used.*



### **CLASS 3 "Animal Elegance"**

**(min. 4 entries)**

*"Until one has loved an animal, a part of one's soul remains unawakened." ~ Anatole France*

*Botanical Animal Jewelry* created using fresh and/or dried plant material. Any representation of an animal is permitted in creating a brooch, bracelet, earrings or necklace, staged by committee. Metal clasps or hooks may be used for ready to wear item. Accessories such as shells or feathers are permitted as well as mechanics for shaping which are to be covered with plant material. Provide a card of plant materials used.

## **SECTION B**

### **PHOTOGRAPHY**

#### **"Capturing Nature and Wildlife"**

*"If you truly love Nature, you will find beauty everywhere."*

*~ Van Gogh*

Consultant: Margot Partridge 908-233-9634, partridgem@navpoint.com

Eligible for the BOTANICAL ARTS PHOTOGRAPHY AWARD

Eligible for PUBLIC POPULAR VOTE

No larger than 8" x 10" print, matted in a 11" x 14" board by exhibitor and staged by committee. Indicate direction for viewing and write name on back of mat for entry. One entry only per exhibitor.

### **CLASS 4 "Four Elements of Nature – Earth, Wind, Fire and Water"**

*"Look deep into nature, and then you will understand everything better."*

*~ Albert Einstein*

Photograph of any element of nature. Plant material must be part of the composition.

### **CLASS 5 "Four Seasons of Nature – Winter, Spring, Summer, Fall"**

*"... every green tree is far more glorious than if it were made of gold and silver." ~ Martin Luther*

Photograph of anything in nature during a specific season. Plant material must be part of the composition.

## **CLASS 6      “Majestic Wildlife”**

*“Wilderness is not a luxury but a necessity of the human spirit”*

*~ Edward Abbey*

Photograph of any wildlife which exudes elegance or majesty. Plant material must be part of the composition.

## **CLASS 7      “Awe-Inspiring”**

*“Keep your love of nature, for that is the true way to understand art more and more.”*

*~ Van Gogh*

Photograph of any other object of nature which inspires greatness including water, sky, architecture or other subjects suggested by NGC in the Handbook, page 95.

# *Division IV*

## **Youth**

## *Creative Kids' Powers*

### **Youth Rules:**

1. Each youth section is judged for horticulture, design and artistic crafts using an adult scale of points, however scores of only 90 are required for a Youth Top Exhibitor Award. Top awards may be awarded in each age group, in each Section A, B and C.
2. All classes to be subdivided by age, 8-9 year olds, 10 year olds and 11 and above. Exhibitors must be 18 years old or younger.
3. All entries must be created or grown by one youth who is identified on the entry card. Provide list of plant materials on card.
4. Container-grown plants must be in exhibitor's possession for 60 days.
5. Accessories are permitted in both Design and Botanical Arts sections. Example feathers, shells etc.
6. Tables covered with light pink tablecloths by committee.

### **Youth Section and Classes:**

Consultants: Alice Cowell 908-518-1602 [alice.cowell@yahoo.com](mailto:alice.cowell@yahoo.com)

Joan Barna 908-232-6211, [joanebee@hotmail.com](mailto:joanebee@hotmail.com)

Eligible for YOUTH TOP EXHIBITOR AWARDS

## **SECTION A DESIGN**

*"You are braver than you believe, stronger than you seem, and smarter than you think." ~ A.A. Milne*

### **CLASS 1 The Design Power of Kids**

*A Design, Freedom of Style*, staged in a space 14"W and 14"L, with no height restriction, staged on an appropriate space of a covered table top. Underlay permitted. Designer's choice of plant material and components. Title of "power" represented on index card with names of plant materials. Created solely by exhibitor.

## **SECTION B BOTANICAL ARTS**

*"You have brains in your head. You have feet in your shoes. You can steer yourself any direction you choose." ~ Dr. Seuss*

### **CLASS 2 Botanical Arts Design - Butterfly Flutter**

*A Pressed Plant Material Plaque* with fresh and/or dried plant material, no larger than 8"x10" attached to a background panel serving as the frame of reference. Staged on an easel provided by the committee. Accessories permitted ie. shells, feathers. A card listing plant materials must be included.

### **CLASS 3 Botanical Arts Artistic Crafts - Give the Birds a Home**

*A Decorated Birdhouse*, supplied by committee with fresh and/or dried plant material, size serving as the frame of reference. Accessories permitted ie. shells, feathers. Staged in a 12"W x 12"L space. A card listing plant materials must be included.

## **SECTION C HORTICULTURE**

*"You have to be unique and different and shine in your own way." ~ Lady Gaga*

### **CLASS 4 Container- grown plant**

*A Container grown plant*, in a 4"-6" pot. Must be in possession of exhibitor and grown for a minimum of 60 days.

*Division V*  
Education  
*Inspirational Learning*

**Education Rules:**

1. Education exhibits may be the work of more than one individual.
2. Some plant material is required.
3. Staged on a six foot table covered with off-white tablecloth.

Consultants: Beth Siano 908-410-4630, elizabeth.siano@gmail.com  
Sharon Shiraga 908-447-2460, swgraphics@comcast.net  
ELIGIBLE for the AWARD OF APPRECIATION

**EXHIBIT 1      The Importance of Native Plants  
in Your Garden**

Using native plants in your garden is crucial because they are naturally adapted to the local climate and soil conditions, providing a vital food source and habitat for native wildlife like birds, insects, and small mammals, while requiring less water and maintenance compared to non-native plants, thus promoting biodiversity and helping to conserve the environment.



*Many thanks to the dedicated team who contributed to the making of this schedule, including all of the chair people and the expert judges team. Also, to the Chair of the show who designed a beautiful cover which captured the essence of the theme.*

*~ Diana Kazazis*

*Thank you also to Westfield TAPinto for providing publicity for the flower show.*

*Thank you to Shady Rest Country Club of Scotch Plains, who graciously hosted our flower show.*